

# THE SMARTBASE CABINET

---

INTRODUCING THE COPENHAGEN SMARTBASE CABINET RANGE

FROM IMPORTEC LTD

# INTRODUCTION

---

- Material types
- Tabletops
- Laminate
- Powder coated steel
- Trespa
- Features
- How to build the order
- Accessories/Optional Extras
- Summary



# COPENHAGEN BASE CABINET RANGE – BUILD IT YOUR WAY

---

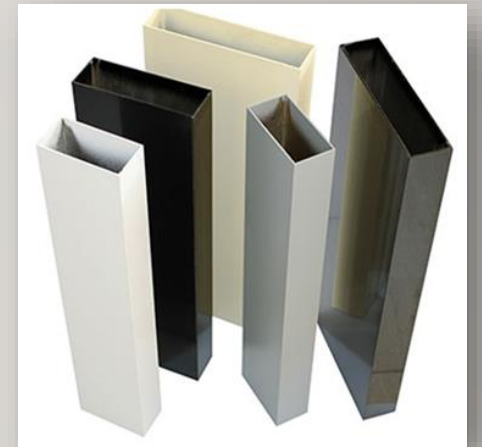
- Choose a cabinet that matches your need.
- Single tabletop can be extended to 800mm
- Versatile modulated easy build system.
- Choose from 3 cabinet styles, then build it up
- Add wheels for mobility.
- Brand it your way.
- Free Delivery when meeting MOQ
- MOQ (4 x singles or 2 x Doubles) £45 per delivery under MOQ



# MATERIALS WE USE FOR THE COPENHAGEN BASE CABINET RANGE

---

- Two types of base cabinet – Laminate or Powder Coated Steel
- Two types of tabletop – Laminate or Trespa
- Laminate front door (Steel door on request at extra cost)
- Stainless steel handles



# LAMINATE AND POWDER COATED STEEL

---

- **Laminate** - to form or press into a thin sheet or layer and cover with or bond to one or more thin layers. Wood like effect. We use a strong robust and authentic laminate produced in Germany.
- **Powder Coated Steel**- Adds colour for aesthetic, camouflage, or safety purposes. Increase the economic life of a structure. Provide additional protection in very aggressive environments. All paint systems used should be specifically formulated for use on galvanized steel and applied in accordance with the paint manufacturer's recommendations.



# WHAT IS TRESPA?

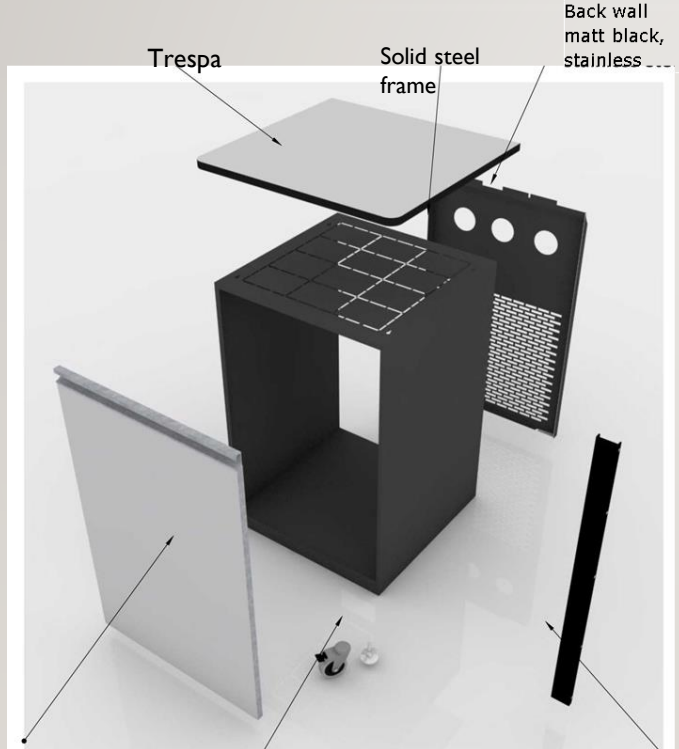
## AND WHY IS IT PERFECT FOR COFFEE CABINETS?

- Trespa plate is made by compressing impregnated paper or wood fibers and epoxy, phenolic or polypropylene resin at high pressure and high temperature. A special surface made with Electronic Beam Curling, a coating technique developed by Trespa, ensures durability and scratch resistance.
- Benefits – Scratch resistant, Water proof, Chemical resistant, Heat resistant and aesthetically perfect.

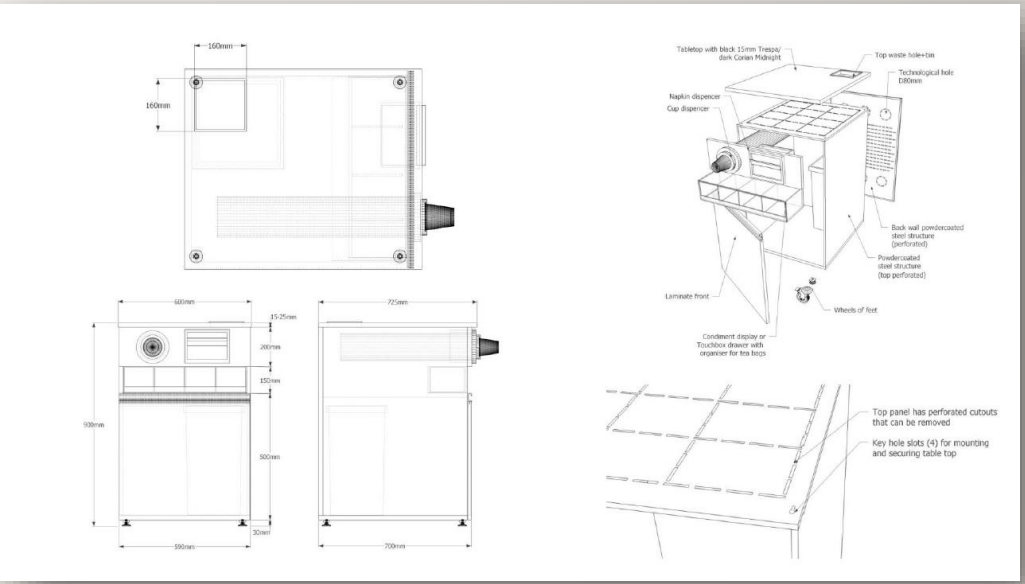


# POWDER COATED STEEL BASE STRUCTURE

WITH TRESPA TABLETOP

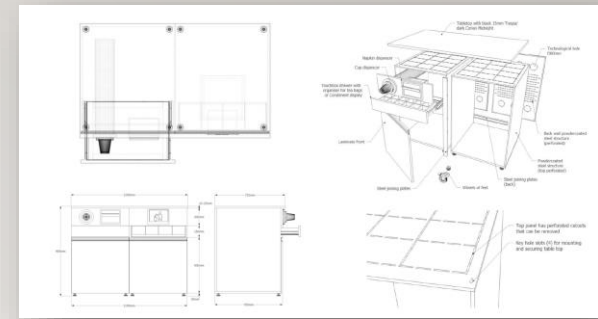


Door laminated chipboard, #18mm



# FEATURES

- Knock out sections for coffee chute
- Ventilation at the rear
- Three round cutouts for cables and water pipes.
- Arrives to you fully assembled to maintain the body strength.
- Any optional extras can be added. We will work with you to get the best results.





# HOW TO BUILD THE ORDER

---

- 1) Decide on single or double **S or D**
- 2) Decide on cabinet material (laminated or powder coated steel) **L or PS**
- 3) Decide on tabletop (laminated or Trespa) **L or T**
- 4) Does it need a bin? **TB** = Top or **FB** = Front
- 5) Do you need cup dispensers? **CD (1, 2 or 3)**
- 6) Do you need a condiment tray? **CT**
- 7) Do you want a serviette holder? **SH**
- 8) Do you need a tea draw? **TD**
- 9) Do you want a back wall? **RW**
- 10) Brand it your way. (no SCU code)
- Branding: We can brand the unit for you. Vibrant, crisp branding at the factory.
- Rear wall, front door, full cabinet or full cabinet and rear wall. (Not sure how to brand? We can help.)

## BRAND IT YOUR WAY

---

We will brand the units with vibrant, state of the art finishes

Branding locations

Front

Sides

Rear wall

If you're unsure how, we work with you on the best branding options.



# SUMMARY

---

- The Copenhagen Base cabinets are Importec Ltd's best seller, Europe wide.
- The personality of the unit is easy to build.
- No more scratched stainless steel surface. Trespa still looks great 5 years later.
- The powder coated steel units have full ventilation and cut outs, specifically designed for the coffee machine market.
- The strength of these units will not let you down. Strong and robust.
- Want to add an integrated water system to compliment the coffee machine? No problem. We just need the manufacturers technical drawings and will make the unit ready.
- Best value with highly competitive pricing.
  
- Email [mb@importec.co.uk](mailto:mb@importec.co.uk) or ring Malcolm on +44(0)7747 444509 UK